



INDIAN SCHOOL
OF BUSINESS
AND FINANCE

Awarding Body



UNIVERSITY
OF LONDON

Academic Direction



THE LONDON SCHOOL
OF ECONOMICS AND
POLITICAL SCIENCE

UNDERGRADUATE PROSPECTUS



Undergraduate Programmes for
Economics, Finance, Data
Science, Management &
Psychology

2026-2027



BUILDING A FOUNDATION FOR SUCCESS

INDEX

02	ABOUT ISBF
05	UNDERGRADUATE PROGRAMMES
06	ADVISORY BOARD, FACULTY & INDUSTRY MENTORS
07	BSC ECONOMICS
09	BSC ECONOMICS AND FINANCE
11	BSC ECONOMICS AND MANAGEMENT
13	BSC BUSINESS AND MANAGEMENT
15	BSC ACCOUNTING AND FINANCE
17	BSC DATA SCIENCE AND BUSINESS ANALYTICS
19	STUDENT OPPORTUNITIES TO STUDY AT LSE
20	INTERNATIONAL EXPOSURE
22	PEDAGOGY
23	EXPERIENTIAL LEARNING
24	AWARDS, PRIZES & PROFESSIONAL CERTIFICATIONS
26	BSC PSYCHOLOGY
28	APPLICATION PROCESS
29	FEE STRUCTURE
30	SCHOLARSHIPS
33	MASTERS AFTER ISBF
35	PLACEMENTS
38	CAMPUS LIFE
40	STUDENT LIFE

TABLE OF CONTENTS



ABOUT ISBF

The Indian School of Business & Finance (ISBF), located in the heart of Delhi, was founded with a vision to provide world-class education in India. Today, ISBF offers a diverse range of undergraduate programs in Economics, Finance, Data Science, Management & Psychology.

ISBF offers students a unique opportunity to earn a degree directly from the University of London with academic direction from either London School of Economics and Political Science (LSE) or King's College London (KCL)

ISBF ASSOCIATIONS

Established in 1836, the University of London is one of the largest universities in the world with 17 independent member institutions. Upon graduation, students are awarded their degree from the University of London at the annual convocation in London.

UNIVERSITY OF LONDON

Awarding Body

Awarding Body



**UNIVERSITY
OF LONDON**

Academic Direction



THE LONDON SCHOOL
OF ECONOMICS AND
POLITICAL SCIENCE

LONDON SCHOOL OF ECONOMICS & POLITICAL SCIENCE

Academic Direction

London School of Economics and Political Science provides academic direction for the Economics, Management, Data Science & Finance programmes at ISBF.



KING'S COLLEGE LONDON

Academic Direction

King's College London provides academic direction for the Psychology program at ISBF.

Since students at ISBF study the curriculum taught at LSE or KCL, the final University of London degree awarded to an ISBF graduate also bears the institution's name.

UNDERGRADUATE PROGRAMMES

All undergraduate programmes at ISBF are three-year, full-time honours degrees. Internationally recognized and highly esteemed, these programmes serve as an excellent foundation for further postgraduate studies at prestigious institutions globally.

The academic session begins with a two-week orientation and Foundation Courses, designed to facilitate a smooth transition to college life and the LSE/KCL curriculum for students.

Programmes Offered:

London School of Economics

- BSc (Hons.) Economics
- BSc (Hons.) Economics & Finance
- BSc (Hons.) Economics & Management
- BSc (Hons.) Accounting & Finance*
- BSc (Hons.) Business & Management
- BSc (Hons.) Data Science & Business Analytics

*Subject exam exemptions for ACCA, CIMA, and ICAEW available.

King's College London

- BSc (Hons.) Psychology



RANKINGS BY SUBJECTS (QS 2024)

#6

Accounting &
Finance
(LSE)

#7

Economics &
Econometrics
(LSE)

#12

Business &
Management
(LSE)

#16

Psychology
(King's College
London)

ADVISORY BOARD



Mr. Devansh Jain
Executive Director,
INOXGFL GROUP



Mr Rikant Pitti
Founder,
Easemytrip



Mr. Ashish Agarwal
Managing Director,
Haldiram Foods



Mr. Asish Mohapatra
Co-Founder & CEO-
OfBusiness



Deepak Gupta
IIT Bombay; Co Founder-
Bombay Shaving Company



Prof. Viney Sawhney
Finance,
Harvard University



Mr. Vidur Varma
London Business School
Director Citibank London



Prof. Dr. Raj K. Singh
Ph.D. : Managment
University of Michigan



Prof. Ignace Hindrick
Director, B.D. at DM
Business Advisors Ltd



Prof. Dr. Wolfgang Viet
Cologne University of
Applied Sciences

FACULTY & INDUSTRY MENTORS



James Abdey
Associate Academic
Director, LSE-UoL



Aryapriya Ganguly
Associate Dean, Management
UoL, Delhi School of Economics



Soumitra Mookherjee
Finance
University of Cambridge



Shailaja Manocha
Marketing
IMT Ghaziabad



Priyanka Ahluwalia
Finance
ICFAI University



Mihir Parekh
Kellogg School of Management
Executive Director, Nilkamal Ltd.



Roshan Shankar
Stanford, Princeton; Founder
Saroja Earth



Rohan Katyal
Georgia Tech; Product
Head at Meta



Gaurav Chopra
London Business School
Founder IndiaLends



Chandan Mendiratta
Indian School of Business
CBO, Zepto



Rashmi Redkar
Harvard Business School
Google



Laurane Saliou
Georgia Tech, Cambridge;
UX at Airtable



Aditya G
Harvard Business School
Founder, Koan Analytics



Dhruv Mehra
Indian School of Business
Global business lead UpGrad



Juhi Bhatnagar
Wharton; Head at
Snapchat India

BSc (Hons) Economics

First Year



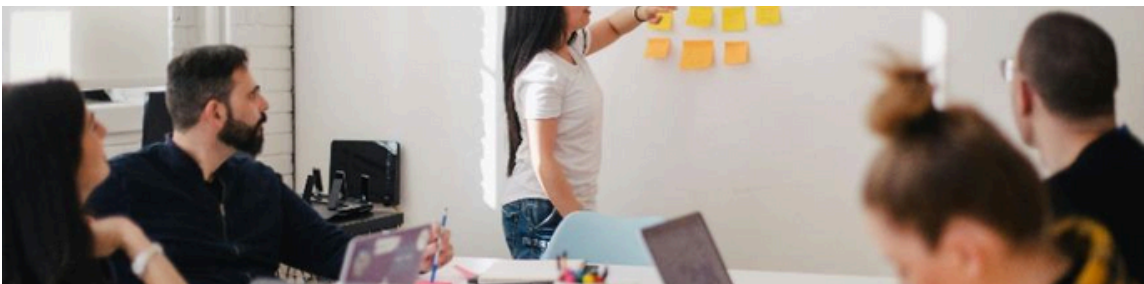
- Introduction to Economics
- Mathematics 1 (Half Course)
- Statistics 1 (Half Course)
- Statistics 2 (Half Course)
- Mathematics 2 (Half Course)
- Principles of Banking and Finance

Second Year



- Microeconomics
- Elements of Econometrics
- Macroeconomics
- Elective Course

Attend a 6 Week LSE Summer School (Credits transferable)*



Eligibility

To pursue this programme, you must have studied Mathematics up to Class XII. There is no other stream or subject-related eligibility criterion. Having studied Economics previously is not necessary.

**Optional*

The BSc (Hons) Economics program provides deep insights into economic models and policy analysis. By engaging with a world-class Economics curriculum, you'll gain skills applicable to a diverse range of careers—from advanced studies at top universities to roles in government, NGOs, multinational companies, startups, and international agencies.

Third Year



- Monetary Economics
- Mathematical Economics
- International Economics
- Elective course

Electives



- Industrial Economics
- Asset Pricing and Financial Markets
- Principles of Corporate Finance
- Further Mathematics for Economists



Did You Know?

Two recent graduates of this programme, sisters Rhiya and Priya Bansal, received full scholarships to pursue MSc Economics at LSE!

BSc (Hons) Economics and Finance

First Year



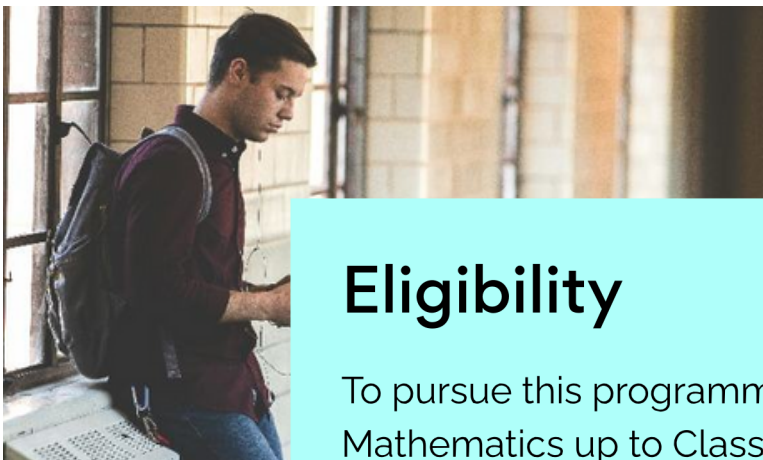
- Introduction to Economics
- Principles of Banking and Finance
- Mathematics 1 (Half Course)
- Mathematics 2 (Half Course)
- Statistics 1 (Half Course)
- Statistics 2 (Half Course)

Second Year



- Macroeconomics
- Microeconomics
- Elements of Econometrics
- Principles of Corporate Finance

Attend a 6 Week LSE Summer School (Credits transferable)*



Eligibility

To pursue this programme, you must have studied Mathematics up to Class XII. There is no other stream or subject-related eligibility criterion. Having studied Economics or Finance previously is not necessary.

You will develop a nuanced understanding of these intertwined worlds - how financial markets, their valuation and volatility impact the economy, and how policy solutions to most economic problems must take the financial markets into account.

Third Year



- Asset Pricing and Financial Markets
- Monetary Economics
- Quantitative Finance
- Elective course

Electives



- Valuation and Securities Analysis
- Business Analytics
- Mathematical Economics
- Applied Modelling and Prediction
- Further Mathematics for Economists
- Entrepreneurship
- Machine Learning
- Management and Innovation of E-Business



Did You Know?

Preparation for this programme significantly helps CFA and Actuarial Science candidates. Prateek Kansal joined this programme and, after 1st year transferred to LSE on a scholarship!

BSc (Hons) Economics and Management

First Year



- Business & Management in a Global Context
- Introduction to Economics
- Principles of Accounting
- Mathematics 1 (Half Course)
- Statistics 1 (Half Course)

Second Year

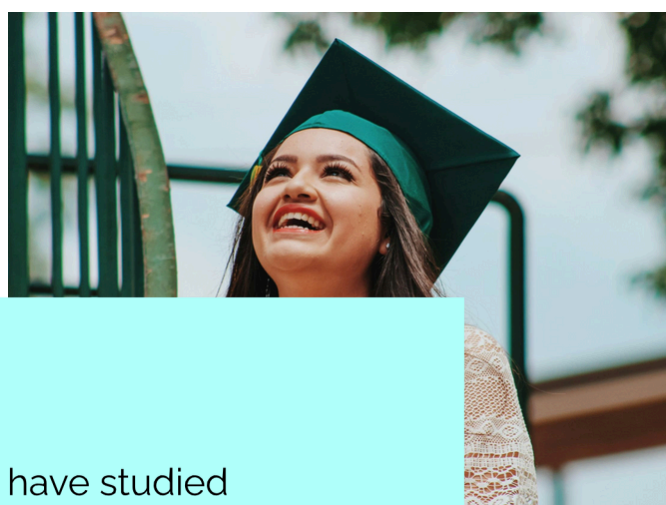


- Core Management
- Concepts
- Microeconomics Macroeconomics
- Elective Course

Attend a 6 Week LSE Summer School (Credits transferable)*

Eligibility

To pursue this programme, you must have studied Mathematics up to Class X. There is no other stream or subject-related eligibility criterion.



This program is perfect for students interested in economics and business, management, aiming to enhance their entrepreneurial and managerial skills. Starting with mathematics and statistics in the first year, you'll delve into analytical courses in management and economics, gaining expertise in areas like microeconomics, macroeconomics, accounting, and marketing.

Third Year



- Elective Course 1
- Elective Course 2
- Elective Course 3
- Elective Course 4

Electives



- Human Resource Management
- Marketing Management
- Management & Innovation for e-business
- Further Maths for Economists
- Elements of Social & Applied Psychology
- Entrepreneurship
- Organization Theory

Did You Know?

Several graduates of this programme have been selected for 1-year work placements with Fortune 500 firms like HSBC, UBS and Morgan Stanley in London and New York!



BSc (Hons) Business and Management

First Year



- Business & Management in a Global Context
- Principles of Accounting
- Introduction to Economics
- Statistics-1
- Mathematics-1

Second Year



- Core Management Concepts
- Human Resource Management
- Marketing Management
- Entrepreneurship

Attend a 6 Week LSE Summer School (Credits transferable)*

Eligibility

To pursue this programme, you must have studied Mathematics up to Class X. There is no other stream or subject-related eligibility criterion.



**Optional*

A 3-year long hands-on programme to help you equip with core functional areas of business like accounting, financial management, marketing, and human resource management, exposing you to emerging areas such as information systems, psychology, and e-business.

Third Year



- Organisation Theory
- Elective course 1
- Elective course 2
- Elective course 3

Electives



- Elements of Social & Applied Psychology
- Management and Social Media
- Human Resource Management
- Marketing Management
- Management & Innovation for e-Business
- Entrepreneurship
- Organization Theory
- Financial Management
- Principles of Banking & Finance

Did You Know?

Several alumni of this course have successfully launched their own businesses. Notable examples include Ritesh Agarwal, the founder of OYO Rooms, and Gaurav Kunwar, who started Harajuku Tokyo Cafe.



BSc (Hons) Accounting and Finance

First Year



- Introduction to Economics
- Statistics 1 (Half Course)
- Mathematics 1 (Half Course)
- Principles of Banking & Finance
- Principles of Accounting

Second Year



- Financial Reporting
- Management Accounting
- Microeconomics
- Elective Course

Attend a 6 Week LSE Summer School (Credits transferable)*

Eligibility

To pursue this programme, you must have studied Mathematics up to Class X. There is no other stream or subject-related eligibility criterion.



**Optional*

This specialized vocational program prepares you for careers in accounting and finance, both domestically and internationally. You'll master finance and accounting principles, financial reporting, and risk management. This comprehensive training readies you for advanced postgraduate studies and offers exemptions from global accounting certifications.

Third Year



- Auditing & Assurance
- Accounting Markets and Organizations
- Asset Pricing and Financial Markets/Financial Management
- Elective course

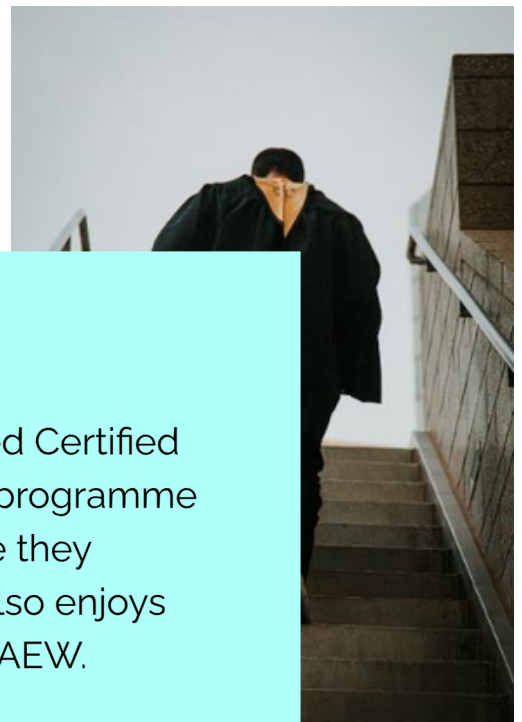
Electives



- Principles of Corporate Finance
- Asset Pricing & Financial Markets
- Quantitative Finance

Did You Know?

Exemptions from the Association of Chartered Certified Accountants (ACCA) enable students of this programme to achieve the ACCA qualification by the time they graduate, at half the cost. This programme also enjoys exemptions from CIMA, CPA Australia and ICAEW.



BSc (Hons) Data Science and Business Analytics

First Year



- Introduction to Economics
- Mathematical Methods
- Business and Management in a Global Context
- Statistics 1 (Half Course)
- Statistics 2 (Half Course)

Second Year



- Information Systems Management
- Business Analytics: Applied Modelling & Prediction
- Elements of Econometrics
- Elective- from Courses being offered

Attend a 6 Week LSE Summer School (Credits transferable)*

Eligibility

To pursue this programme, you must have studied Mathematics up to Class XII. There is no other stream or subject-related eligibility criterion. Having studied CS previously is not necessary.



**Optional*

The BSc Data Science and Business Analytics program develops advanced skills in statistical and machine learning techniques. Graduates will excel in creating statistical models, utilizing quantitative models, and analyzing complex data using advanced techniques. They will also be proficient in statistical software and programming languages such as R and Python for data analysis.

Third Year



- Statistical Methods for Market Research
- Machine Learning
- Advanced Statistics: Distribution Theory & Statistical Inference

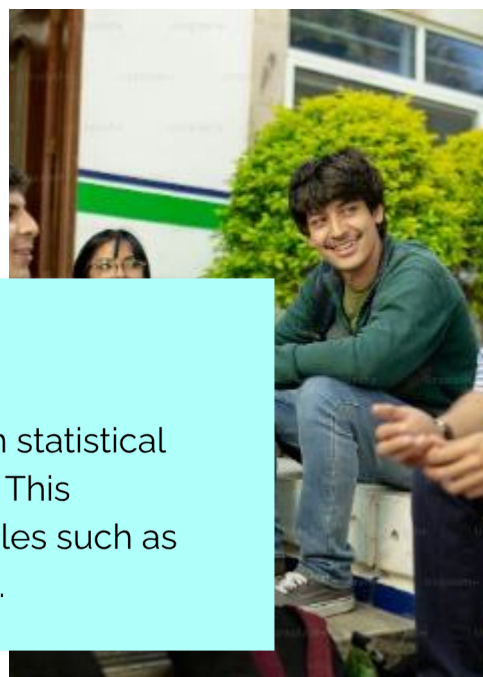
Electives



- Mathematics for economists
- Machine learning
- Business Analytics: Applied Modelling & Prediction

Did You Know?

This course equips students with essential skills in statistical analysis, data visualization, and business strategy. This comprehensive training prepares graduates for roles such as Data Analyst, Business Analyst, and Data Scientist.



STUDENT OPPORTUNITIES TO STUDY AT LSE



Transferring to LSE for 2nd year entry

ISBF students are welcome to apply to the 2nd year of entry of a relevant undergraduate degree at LSE. Please bear in mind that transfer is not automatic and admission is highly competitive, as a limited number of places are available for both first and second year entries.

LSE General Course

ISBF Students who have completed at least four full courses on their University of London EMFSS degree programme are also able to apply for admission to the LSE General Course in their 3rd year, which allows students from across the world to spend a full academic year at LSE and claim credit for the successful completion of relevant courses.



My journey from ISBF to LSE in 2nd year has been transformative. ISBF's rigorous academic environment, coupled with its close alignment with LSE's teaching methodology, prepared me exceptionally well for the transition.



Prateek Kansal, BSc (Hons)
Economics & Finance, 2016 - 19



Attend 6 weeks at LSE

The LSE Summer School tailored for EMFSS students, offers an exceptional opportunity to study at the prestigious London School of Economics and Political Science (LSE) while immersing in the vibrant cultural and academic environment of London.



**World-Class
Education**



**Cultural and Social
Engagement**



**Professional
Development**

Exclusive Benefits for EMFSS Students

► **Enhanced Discounts:**

EMFSS students receive a 40% discount on tuition fees for enrolling in two courses over six weeks—a savings of approximately £2,000! For single-course enrollment, students enjoy a 15% discount on tuition.

► **Credit Towards Your Degree:**

By completing two courses, students can earn 30 credits, equivalent to one full EMFSS course. This may reduce the course load during the academic year, offering a more flexible study plan.



#5

Recognised Teaching
college of LSE



1500+

Alumni Base of ISBF



20000+

Alumni Base of UoL



PEDAGOGY

01

FORMATIVE ASSESSMENTS AND FEEDBACK

Students appear for one assessment per course per month, and understand where they stand and how they can improve their learning.

02

PEER REVIEW TUTORING (PRT)

Senior students teaching their juniors, under the supervision of faculty members.

03

PROJECTS & LIVE CASE STUDIES WITH STARTUPS

Students engage in live case studies with mentorship from startups and industry experts. Working in small groups guided by ISBF faculty, they explore real-world problems from an interdisciplinary perspective. This approach integrates learning from their courses throughout the year, providing practical experience and insights for the professional world.

THE THREE PILLARS OF TEACHING & LEARNING AT ISBF ARE



Asking
Questions



Open-door
Policy



Learning
by Doing

04

FACULTY TRAINING

Delivered through an annual, dedicated 4-day visit by a senior member of LSE's Teaching and Learning Centre and other regular interactions throughout each academic session.

05

VIRTUAL LEARNING ENVIRONMENT (VLE)

Curated and updated continuously by LSE, this is a rich virtual repository of learning resources, course updates, discussion forums and also access to the online UOL Library.

EXPERIENTIAL LEARNING



2

INDUSTRY VISITS & MENTORSHIP PROGRAMS

Step inside the dynamic business world with Industry Visits, offering a real-world glimpse into successful companies



1

WORKSHOPS AND BOOT CAMPS

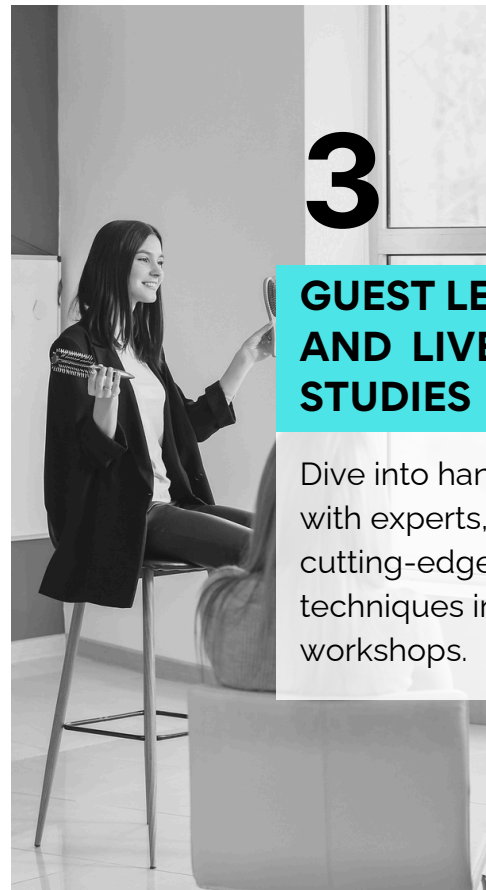
Ignite innovation in our Annual Entrepreneurship Challenge, where students transform ideas into impactful ventures



4

BUSINESS COMPETITIONS

We collaborate with corporations to tackle real business challenges, analyze them, and present solutions, often receiving feedback from company executives.



3

GUEST LECTURES AND LIVE CASE STUDIES

Dive into hands-on learning with experts, mastering cutting-edge tools and techniques in our interactive workshops.

AWARDS & PRIZES

UOL give away a variety of prestigious academic awards, prizes and scholarships every year to students of these programmes, and ISBF students have been disproportionately successful at bagging these.



Given to the best performing degree/diploma students in the year-end LSE exams

20 students in the last 6 years



Given to a student who attempts at least three full courses, and scores at least 70% in each of them

30 students in the last 5 years



Given to the top 5 performers in the 1st year of LSE examinations, from India, Pakistan and Sri Lanka

25+ students in the last 8 years

PROFESSIONAL CERTIFICATIONS

For students pursuing BSc (Hons) Accounting and Finance

Association of Chartered Certified Accountants (ACCA)	Europe	Exemptions for 7 out of the 13 examinations.
Chartered Institute of Management Accountants (CIMA)	UK and Ireland	Exemptions for 6 subjects.
Institute of Chartered Accountants in England and Wales (ICAEW)	Over 147 countries	Exemptions for 5 subjects.

GMAT/GRE EXEMPTION

Get a waiver for GMAT & GRE when applying for select Masters in UK and other countries.

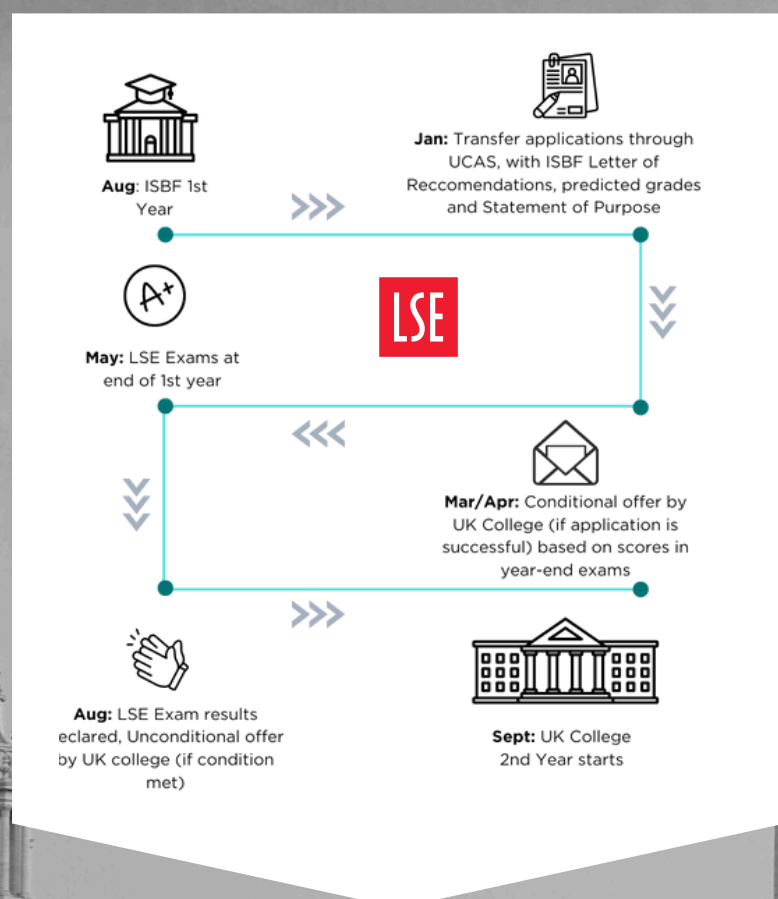
GRADUATION IN LONDON

All students get an invitation to attend the UOL convocation in London.

SECOND-YEAR TRANSFERS ABROAD

Over the years, many students have completed 1st year at ISBF and then gone on to transfer to a prestigious foreign university to complete the remainder of their undergraduate study. This unique opportunity is challenging to earn, with most institutions only accepting a few students each year, yet ISBF's track record suggests that it is perhaps your best bet if you wish to transfer into 2nd year at any top institution overseas.

This is, of course, because the world-class foundation of an LSE 1st year prepares you to cope successfully with 2nd year studies anywhere in the world. As a result, ISBF students have been successfully accepted into 2nd year not just at LSE, but also at other leading institutions in the UK, US, Hong Kong, Canada and Australia.



BSc (Hons.) Psychology



First Year

First Session

- Research design and statistics 1A
- Developmental psychology
- Biological psychology
- Research skills 1: qualitative skills

Second Session

- Research design and statistics 1B
- Applications of psychology
- Learning personality and intelligence
- Social psychology

Second Year

First Session

- Cognitive psychology
- Understanding individual differences
- Applications of psychology
- Philosophy of psychology

Second Session

- Research skills 2: literature skills
- Research design and statistics 2B: Multivariate measures
- Health and addictive behaviours
- Clinical psychology

Third Year

First Session

- Current issues in neuroscience
- Forensic psychology
- Mental health around the world
- Research project 1: foundation

Second Session

- Occupational psychology
- Gender and mental health
- Research project 2: consolidation (30 CREDITS)

Academic Direction by King's College London



As a graduate of this programme, you will be able to:

- demonstrate a sound understanding of all the main areas of psychology
- demonstrate the ability to exercise critical judgement in the evaluation of research in the field
- apply a critical understanding of essential concepts, principles and research in psychology, and critically evaluate the results, in the context of loosely defined scenarios, using structured arguments based in empirical evidence
- demonstrate the ability to produce a substantial piece of original or empirical research work including, for example, study design, data collection, analysis and reporting.

Where can it lead?

Studying psychology opens up opportunities to develop your career across a range of sectors such as education, healthcare, social care, criminal and legal services.

Your degree could lead to a career in areas such as forensic psychology, health psychology, youth services, counselling or human resource management

Eligibility Criteria:

To be eligible to register, you must:

For Cambridge A Level students:

- have passed at least six separate subjects at GCSE or GCE O level or equivalent; and
- One of these GCSEs must be obtained in Mathematics, at grade A – C/9 – 4 or equivalent

If coming from an Indian board, the eligibility criteria is as below:

Grade 12, Regional / All India (CBSE/ ISC/ State Boards) – 6 non-overlapping subjects, including Maths – all passed at 50%+. Furthermore, the applicant must be at least aged 18 by the registration deadline of their enrolment session.

Availability of Psychology lab for hands-on simulations and experiments, enhancing student's understanding of psychological concepts and research methods.

APPLICATION PROCESS

Our undergraduate application process is streamlined and transparent, designed to provide you with all the necessary information to make an informed decision about your future studies.

Detailed information about the application process, programme specifics, and campus life will be discussed during a personalized counseling session. We encourage you to take advantage of this opportunity to address any queries or concerns.



Complete the **Online Application Form**.

01



The **ISBF Entrance Test** or iMET is conducted online and it tests a candidate's ability to reason logically, assimilate information meaningfully from multiple reading sources, and apply concepts learned in Mathematics up to Class X.

02



Personal Interview: Shortlisted candidates will be invited for a personal interview where they will be tested for communication skills, acumen for learning, academic curiosity and motivation to study at ISBF.

03



FEE STRUCTURE 2026-27

Fee payment schedule for Undergraduate Programmes in 1st year

A) Fee Payable to ISBF

Particulars	Amt (INR)
Admission Fee	30,000
Tuition Fee – first installment	50,000
GST (18%)	14,400
Security Deposit	10,000
I. First Installment Total	1,04,400
Tuition Fee – second installment	2,41,500
GST (18%)	43,470
II. Second Installment Total	2,84,970
III. Third Installment Total	2,84,970
Total Fee Payable (I+II+III)	₹6,74,340

B) Fee Payable to University of London

Particulars	Amt (Great British Pound)
Fee per course (inclusive of first assessment entry)	660 x 4
Total Fee Payable	£ 2,640

*As per the Pound–Rupee exchange rate in December 2025, the equivalent amount in Indian Rupees (₹) is 3,17,838, and is subject to change.

Total Fee Payable

Particulars (A+B)	Amt (INR)
Fee Payable to ISBF + Fee Payable to University of London	6,74,340 + 3,17,838
Total Fee Payable	₹9,92,178

Note:

- Fee payable to the University of London (UOL) are subject to change at their discretion and it is mandatory to pay.
- The fee payable to ISBF is to be paid in three installments and is subject to change. For due dates, please reach out to the ISBF Programme Office.
- If a student wishes to withdraw their admission from ISBF for any reason, the refund will be processed strictly as per the refund policy stated in the Offer Letter.

SCHOLARSHIPS

Many of our students benefit from scholarships awarded to individuals with exemplary achievements in various fields. Applicants are urged to apply for the scholarship best aligned with their qualifications.



Chairman's Merit-Based Scholarship

This scholarship recognizes and provides financial aid to students with outstanding academic achievements and accomplishments. Our merit-based scholarships are also sensitive to financial need and offer up to a 50% reduction in tuition fees, as determined by the selection committee.

Devansh Jain Diversity Scholarship

This scholarship is committed to supporting exceptional students from economically disadvantaged, marginalized, or underserved communities. This will offer up to a 25% reduction in tuition fees, as determined by the selection committee.

Rikant Pitti Scholarship for Economics/Finance Leaders

This scholarship is awarded to students who have shown a strong interest and achievement in economics or finance, whether through participation in related events or school clubs, and who aim to enhance their career opportunities in these fields. This will offer up to a 15% reduction in tuition fees, as determined by the selection committee.



Asish Mohapatra Scholarship for Young Entrepreneurs

This scholarship is designed for young entrepreneurs who have demonstrated exceptional talent and ambition in creating or running their own businesses or ventures. This will offer upto a 20% reduction in tuition fees, as determined by the selection committee.

Deepak Gupta Merit Based Scholarship

This scholarship is tailored for students who have demonstrated exceptional academic achievement by scoring over 96% in their final high school examinations. Eligible students will be rewarded with a 15% reduction in tuition fees.

Ashish Agarwal India- Bound Scholarship

This scholarship targets Indian-origin students living abroad (i.e., PIO cardholders) who aim to connect with India's corporate and professional environment. It supports those who wish to return to India for a top-notch education that could significantly advance their careers. This will offer upto a 15% reduction in tuition fees, as determined by the selection committee.

Jagannath Scholarship for Outstanding Extracurriculars

This scholarship is designed to honor students who have shown remarkable initiative and leadership by actively participating in student-run committees, clubs, and other school activities. This will offer upto a 20% reduction in tuition fees, as determined by the selection committee.

ISBF Need-Based Scholarship

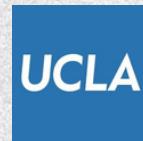
This scholarship recognizes and provides financial aid to students with outstanding academic achievements and accomplishments. Our merit-based scholarships are also sensitive to financial need and offer upto a 50% reduction in tuition fees, as determined by the selection committee.

ISBF Scholarship for Women

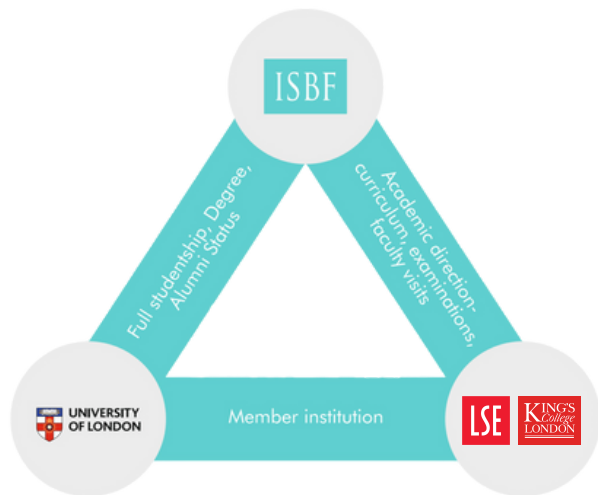
This scholarship supports talented female students with a strong academic background and the ambition to become industry leaders. This will offer upto a 15% reduction in tuition fees, as determined by the selection committee.

A WORLD OF OPPORTUNITIES

ISBF students benefit from a globally recognized curriculum and receive a prestigious degree, positioning them advantageously for top Master's and MBA programmes worldwide. This competitive edge has enabled them to secure scholarships and gain acceptance into programmes where Indian students typically face challenges.



MASTERS AFTER ISBF



MASTERS IN INDIA

Being a UK undergraduate degree, the UOL degree is beyond the purview of UGC. To retain options for postgraduate study and government jobs in India, ISBF provides all students with the opportunity to pursue a UGC-recognised degree from the Delhi University School of Open Learning (DUSOL), unless they opt out. This involves nearly zero extra effort and cost. Students graduate with both a UOL degree and a DU degree, benefiting from the best of both worlds.

MASTERS ABROAD: GLOBAL ADVANTAGE

ISBF students engage with a curriculum designed and directed by the London School of Economics and Political Science (LSE) or King's College London (KCL), both prestigious institutions, under the University of London (UoL). This strong academic foundation prepares them for top Masters programs at leading global universities. Graduates may be exempted from standardized tests like the GRE or GMAT when applying to select programs abroad, simplifying the admissions process for higher studies. The UoL degree also meets the 16-year education prerequisite for postgraduate studies in the US, Canada, enabling seamless transitions to advanced academic pursuits.



CAMBRIDGE

HARVARD
UNIVERSITY



Stanford
University



COLUMBIA
UNIVERSITY



MOUNTBATTEN PROGRAMME

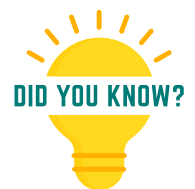


Morgan Stanley



ISBF, in collaboration with the Mountbatten Institute, offers students the chance to complete one-year work placements with Fortune 500 companies at their London or New York headquarters. The high international standards of education at ISBF, coupled with a strong aptitude for analytical thinking, have allowed numerous students to successfully navigate rigorous interview processes and secure these prestigious positions. This invaluable exposure to highly professional environments has been transformative for many, with some even impressing their employers enough to receive full-time job offers at the India offices of these global corporations.

Vignesh Balasubramaniam (BSc Economics & Management, 2020-23) secured a prestigious placement at HSBC, London through ISBF's collaboration with Mountbatten Program.



A YEAR IN LONDON OR NEW YORK



Placements

The dedicated and seasoned Careers Team at ISBF facilitates final placements, for those students who have opted to work after graduating, in suitable roles with reputed firms. To this end, they adopt the following means:

Entrepreneurship



Oyo Rooms
Accommodation
aggregator



AFK Gaming
e-sports



Almora
Cryptocurrency
and blockchain



Dinks Bakery
Desser parlour



Erika Organics
Organic food store



MEDdelivery
Medicine supply
chain



Rackconnect
Sports dating



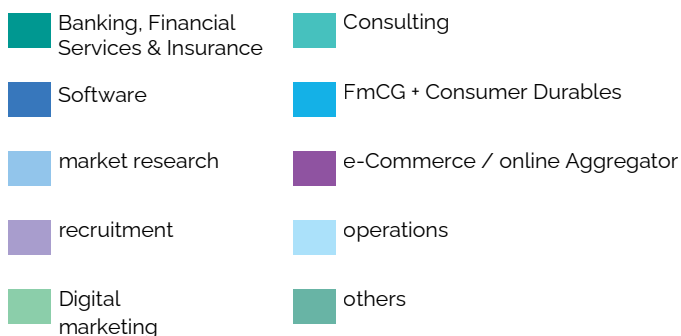
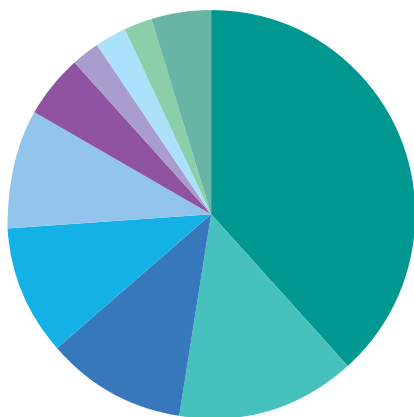
The Royale
Peacock
Handcrafted
leather shoes

Did You Know?

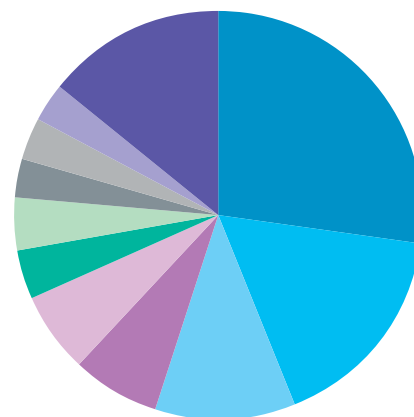
Ritesh Agarwal, Founder and CEO of **OYO Rooms**, studied and, in true entrepreneurial tradition, dropped out of the BSc (Hons) Business and Management programme at ISBF!

Placement Highlights

Placements by Sector (2019-2023)



Placements by role (2019-2023)



Recruiters

Companies that have evaluated ISBF students in the 2016-23 period.

Economics

Barclays Shared Services	Corporation
BMR Advisors	PMV Agro Foods
Cians Analytics	Perfect Research
Gerson Lehrman Group	Protiviti Consulting
Hindustan Times	PricewaterhouseCoopers
Milliman India	The Economist Intelligence Unit
National Council of Applied Economic Research	The Smart Cube
National Skill Development	Willis Towers Watson
	XL Catlin
	ZS Associates

Management

ABC Consultants	Ipsos Research
American Express	ITV Network
Aroma Magic	Jaro Education
AuthBridge BA	Jivo Wellness
Continuum	JK Cement
Bloomberg Corner	JK Group
Office Advisors	JK Tyre & Industries
Daffodils Software	Kantar IMRB
Data Bridge	KEN Research
DS Group	Korn Ferry
Dyson International	Mohani Tea
Egon Zehnder	Naukri.com
Ernst & Young	NirSan Connect
GoDaddy	Orient Craft
Green Thumbs	OYO Rooms
Hero MotoCorp	PMV Maltings
Iffort	Protiviti Consulting
Ikya Global	United Nations
Insight Alpha	UNICEF

Finance

Ameriprise Financials	Fidelity Investments
Anand Rathi	Finedge Advisory
Aurum Equity	Forrester Research
Axis Mutual Funds	Genpact
Barclays	Great Eastern Money
BlackRock	IHS Markit India
Care Ratings	Integreon
Caston Advisors	iVentures Capital
CBRE Group	Knight Frank
Citigroup	KPMG
Client Associates	MCube Financials
Cross Border Financial Research	Mercer
Cushman & Wakefield	Moody's Analytics
Darwin Labs	Nexgen Financials
Deloitte	Planify
Deutsche Bank	Pricewaterhouse Coopers
Devenio Optimus	Resurgent India
DSP BlackRock	Royal Sun Alliance
Ericsson	S&P Capital IQ
Ernst & Young	Veristrat
Evalueserve	WNS
Exevo	

Data science

Absolutdata	United Health
American Express	Group Unison
BA Continuum	International
BlackRock	United Biscuits
Optum Global	Urban Company
Royal Bank of Scotland	Veris Technologies
	TGL Group

YOUR NEXT CAMPUS!



CAMPUS LIFE

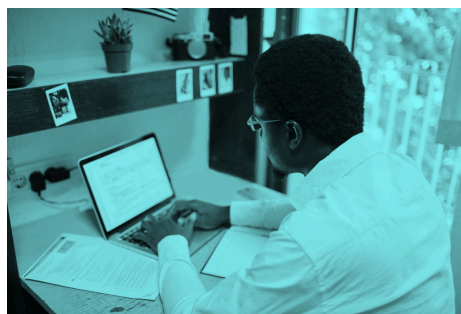
ISBF is strategically situated in the vibrant heart of Delhi, mirroring the dynamic city-center atmosphere. Positioned in a central, accessible, and safe area, the campus is especially conducive to student life.



AMENITIES

- ISBF features a fully Wi-Fi-enabled, 1-acre campus.
- State-of-the-art classrooms.
- Well-stocked library.
- Cricket turf and futsal along with table tennis, pool, and other sports facilities.
- Diverse recreational spaces including games areas and a cafeteria.
- Easy access to external facilities including sports complexes and medical services.
- Ample opportunities for physical activity and sportsmanship within the campus bounds.
- Hostel accommodations are conveniently located a short walk from the campus.
- Supportive and well-rounded student environment.
- Essential amenities such as underground parking.

HOSTEL SERVICES



① Modern Amenities

Our 3rd party hostels are equipped with state-of-the-art facilities including Wi-Fi, Netflix/Amazon on TV, recreation areas, and a well-maintained entrance hall.



② Proximity to Campus

Conveniently located within walking distance to the main campus, saving you time and making your commute hassle-free.



③ Community Living

An opportunity to live and interact with your peers, fostering a sense of community and collaboration.



④ Nearby Conveniences

Located near several malls and shops, providing easy access to all your shopping and recreational needs.



⑤ Inclusive Meals

Meals are often included, offering nutritious and delicious options to keep you energized throughout the day.

COLLEGE SOCIETIES

The composite of ISBF is not limited to academics. Students engage in many extracurricular and co-curricular activities.

List of Societies

- Core Council
- Girl Up, Zia
- Events Team
- Akademia
- Artefactory, The Design Society
- Sports Society
- Entrepreneurship Cell
- Cultural Society
- Investment Cell
- Zariyaa – Community Service Division
- The Career Placement Cell (CPC)

The annual intercollege cultural festival, Xenia, brings together a number of these and marks the zenith of the non-academic calendar.

All societies are student-led and designed to cater to a wide range of hobbies and interests, ensuring that every student can find a community that aligns with their passions.





WHERE LEARNING MEETS LIVING



Students engage in a multitude of extra-curricular and co-curricular activities, ranging from research, MUN, social work, debating and entrepreneurship to dance, music, sports, photography, design and many more. All these activities are organised end-to-end by student societies - you can join one of them, or start one if you seek to nurture new interests!



JOIN THE PURSUIT

Begin your academic journey at ISBF



VISIT US

**FC-33, Plot 1&2,
Jasola, New Delhi,
110025**

 **+011 4043 0000**

+91-9599181862

 **ugadmissions@isbf.edu.in**

 **isbf.edu.in**

 **www.isbf.edu.in**